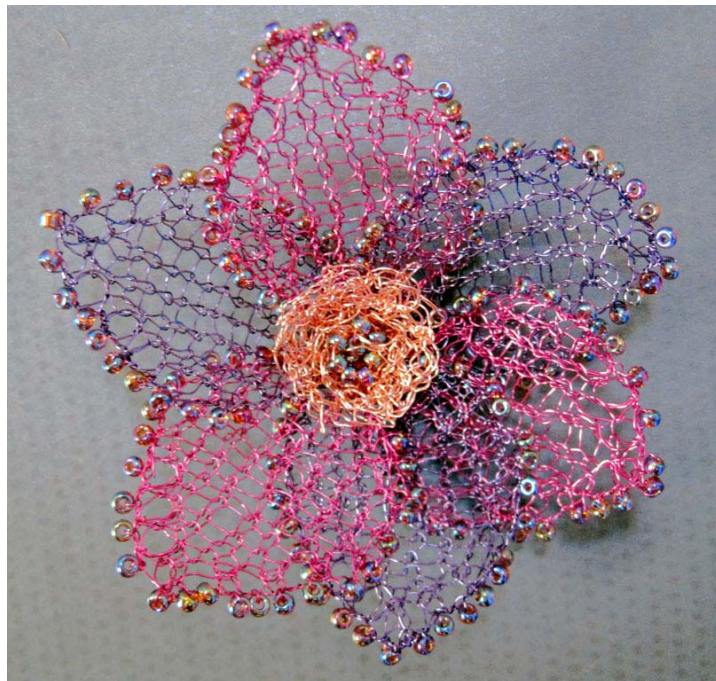


# Bead and Wire Necklace, Bracelet and Flower.



## Materials

0.2mm enamelled coloured wire (available from <http://wires.co.uk/> )  
Size 10 or 11 seed beads (approx 20gms)  
2.0mm needles (for the necklace you may find it easier to use a circular needle)  
Beading needle and Nymo thread (or other thread suitable for attaching the clasp/closure to the wire necklace and bracelet)  
Clasp/closure or large bead(s) to close the necklace and bracelet  
Broach pin for the flower

## Knitting Notes

It is necessary to thread the beads onto the wire before starting to knit. As the wire is fairly firm you don't need to use a beading needle just use the wire to pick up the beads. It is important to pick up enough beads for the whole necklace or bracelet before starting to knit.

If you find you don't have enough beads but are near the end of the project pull out enough wire to complete the project, cut the wire and thread the extra beads on from this end. Continue knitting to finish the project.

If necessary you can cut the wire and join on the wire again at the side edge. When you have knitted a few stitches with the new wire twist the two wire ends around each other and when you finish wind them in and out of the edge for several rows before cutting the end and squeezing together with the wire knitting or bury the end in a bead hole if possible.

When working the bead rows a bead is slipped up next to the last stitch knitted and then knit the next stitch. The beads are not knitted through the stitches but sit between the stitches.

## Knit Cast On

Make a slip knot and place the loop on the left hand needle to form the first stitch.  
\* knit into the stitch, and place the loop of the new stitch onto the left hand needle \*  
Continue in this manor until you have the required number of stitches.

## Necklace

(The stitch pattern is a multiple of 5 plus 2 stitches for the selvedge at each end.)

Using the knit cast on and pushing a bead up between every cast on stitch, cast on 152 stitches (or the number of stitches you require)

Knit 1 row

**Row 1:** (right side) k1, yarn forward, \*k5, slip successively the 4<sup>th</sup>, 3<sup>rd</sup>, 2<sup>nd</sup> and 1<sup>st</sup> stitches just knitted over the 5<sup>th</sup> stitch and off the needle, yarn forward\* rep from \* to the last stitch, k1.

**Row 2:** p1, \*[p1, yo, k1tbl] all into next stitch, p1\* rep \* to \* to the end of the row.

**Row 3:** k2, k1tbl\*k3, k1tbl\* rep \* to \* to last 2 stitches, k2.

**Row 4:** knit the row slipping a bead up between each stitch (the bead sits between stitches, it is NOT knitted through the stitch).

Cast off.

### **To make up**

You can either use a bought clasp to sew onto the necklace or you can make your own closure by making a loop with beads at one end of the necklace and a large bead to go through the loop at the other end. It is easier to work the loop and large bead attachment using a beading needle and Nymo thread as this is more flexible than the wire. You can also add more beads on the Nymo thread between the wire knitting and the clasp if you need to adjust the length of the necklace.

Work the ends of wire in and out through the beads for a number of stitches then cut the wire and push the wire end into a bead so it won't catch.

### **Beaded Cuff**

Using the knit cast on (and leaving a long end of wire if you are going to make the closure with the wire), cast on 15 stitches (or required width of cuff)

**Row 1:** Knit

**Row 2:** k1 \*slip up 1 bead, k1\* repeat to the end of the row.

Repeat these two rows for the length of the cuff.

Cast off

### **To make a closure**

You can make a closure using the wire from the cuff to make 3 loops at one end and attach accent beads at the other end. Wrap the wire around each end stitch pushing a bead up along the edge for each wrap until you reach the point you want the first loop. \*Make a loop large enough for the accent bead to pass through (you can also push up beads to cover the loop). Continue wrapping the wire around the edge with a bead on each wrap to the next point to want a loop.\* Repeat from \* to \* once more and then work to the end of the bracelet. Pass the wire backwards and forwards through the stitches and bury the end in a bead hole.

At the other end make a closure in the same way but instead of making a loop thread on a larger bead (or several larger beads if you want), bring the wire back through the large bead to the edge and continue wrapping the edge and adding a larger bead to the end of that edge.

### **Wire and Beaded Flower**

The petals of the flower are knitted in wire and then the beads are attached to the edges of each petal

#### **Petal**

Using the knit cast on (and leaving a long end of wire for you to use to attach the beads), cast on 5sts.

**Row 1:** knit

**Row 2 and all even no. rows:** purl

**Row 3:** k1, kfb, k1, kfb, k1 – 7sts

**Row 5:** k1, kfb, k3, kfb, k1 – 9sts

**Row 7, 9 and 11:** knit

**Row 13:** k1, ssk, k3, k2tog, k1 – 7sts

**Row 15:** k1, ssk, k1, k2tog, k1 – 5sts

**Row 17:** k1, sk2po, k1 – 3sts

**Row 19:** sk2po, cut a long end of wire and pull the end through the last stitch.

Make 6 petals.

### **Flower centre**

Using the knit cast on, cast on 10sts

**Row 1:** kfb into every stitch – 20sts

**Row 2 and even number rows:** knit

**Row 3:** kfb into every stitch – 40sts

**Row 5:** kfb into every stitch – 80sts

**Row 6:** knit and cast off

### **To Make Up**

Roll the flower centre into a little spiral sewing the cast on edge together. On each petal using the long wire ends, \*pick up a bead, push it down next to the knitted edge and take the wire through the edge stitch\*. Repeat from \* to\* to fix a bead next to every row all the way around the petal. Once all the petals have been beaded lay the petals over each other so they overlap and with the flower centre in the centre of the petals sew the petals in place with the wire. (You should be able to sew with the wire using an ordinary small tapestry needle. Sew beads into the centre of the flower to finish. Sew onto a broach pin or attach to a ribbon or chain for a pendent.